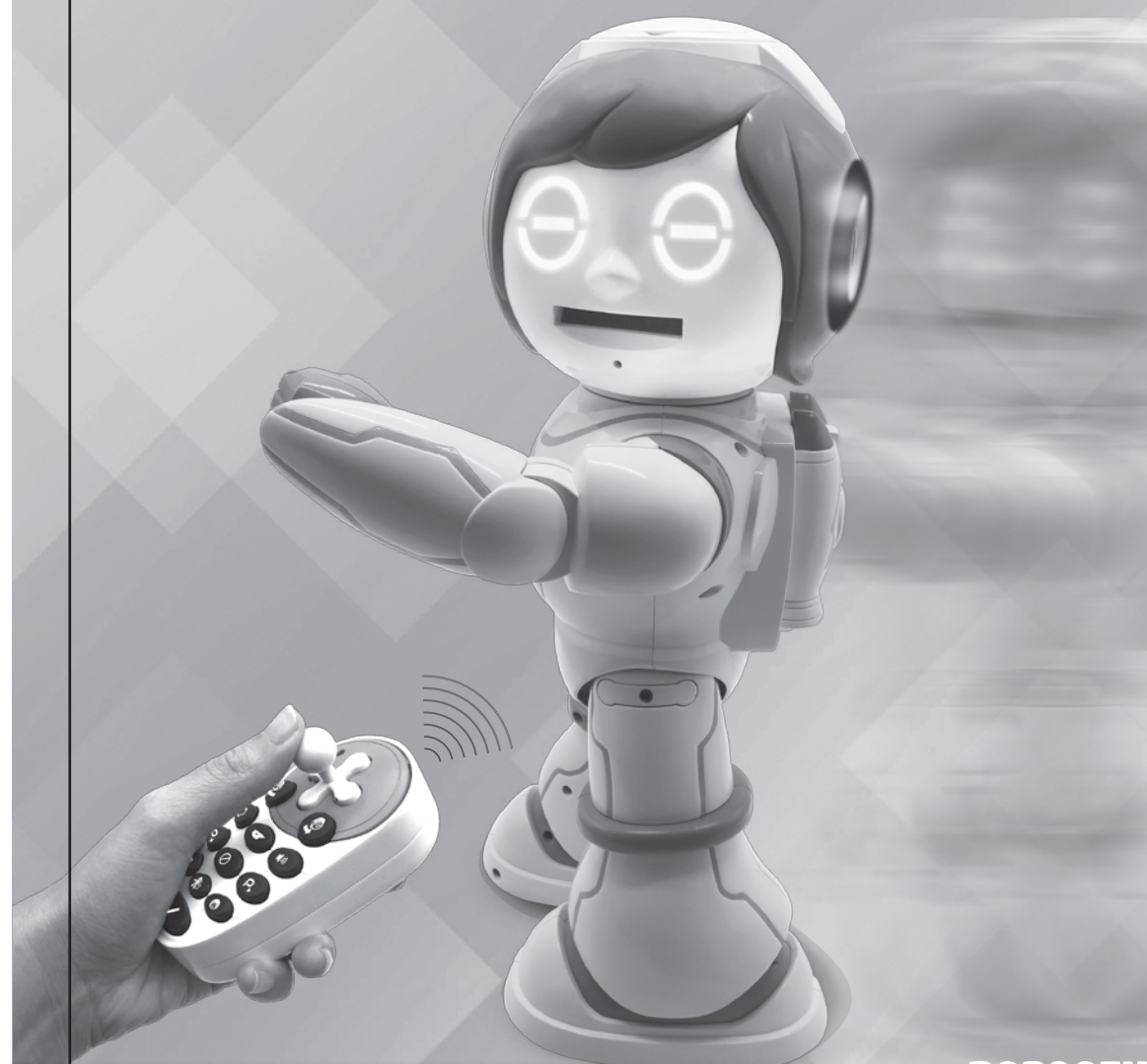


Powerman[®] Kid

BILINGUAL MY SMART ROBOT
ENGLISH - SPANISH

POWERMAN[®]KID IS YOUR ALL-NEW INTERACTIVE AND EDUCATIONAL ROBOT WITH A SENSE OF HUMOUR! CONTROL HIM WITH THE REMOTE CONTROL AND THE KEYS LOCATED ON HIS CONTROL PANEL TO UNLOCK HOURS OF FUN!



MY NAME IS POWERMAN[®] KID! I'M THE COOLEST ROBOT AND I SPEAK ENGLISH AND SPANISH!

I'M A MARVEL OF TECHNOLOGY THAT IS PROGRAMMABLE, INVENTS YOUR OWN STORIES, AND INCLUDES THE ULTIMATE EDUCATIONAL CONTENT TO LEARN AND HAVE FUN!

I ALSO LIKE TO DANCE, TELL HILARIOUS JOKES AND SHOOT FOAM DISCS ALL OVER THE PLACE!

I SPEAK ENGLISH AND SPANISH AND I WOULD LOVE TO HAVE DISCUSSIONS IN THESE TWO LANGUAGES WITH YOU!

I LOVE NUMBERS, I CAN COUNT UP TO 1 MILLION BY THE WAY.

I HAVE VISITED MANY PLACES AND I CAN REPRODUCE THE SOUNDS OF THESE PLACES FOR YOU TO DISCOVER.

I CAN ALSO PLAY THE SOUND OF MANY MUSICAL INSTRUMENTS.

I CAN'T WAIT TO SHARE ALL THESE ACTIVITIES WITH YOU!

INSTRUCTION MANUAL

ROB90EN

LEXIBOOK[®]

PACKAGING CONTENTS

When opening the product's packaging, please ensure that the following elements are included:



1 x POWERMAN[®] KID



1 x remote control



9 x foam disc



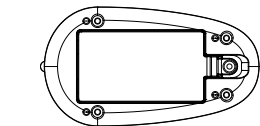
1 x instruction manual

WARNING : All packaging materials, such as tape, plastic sheets, wire ties and tags are not part of this toy and should be discarded for your child's safety.

BATTERY REQUIREMENTS



The robot operates with 5 x 1.5V AA/LR6 batteries (3 batteries for demonstration are included; need to replace demonstration batteries when play)

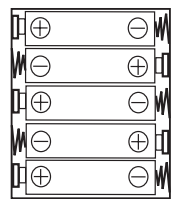


The remote control operates with 2 x 1.5V AA/LR6 (not included)

ROBOT :

Battery installation or replacement

- Use a screwdriver to loosen the screw on the battery compartment located at the back of the robot.
- Push the compartment door latch, and then pull to remove the compartment.
- Install or replace 5 x AA/LR6 batteries, observing the polarity indicated at the bottom of the battery compartment, and as per the diagram shown opposite.
- Close the battery compartment and tighten the screw.

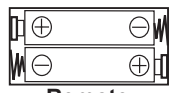


Robot

REMOTE CONTROL:

Battery installation or replacement

- Use a screwdriver to loosen the screw on the battery compartment located at the back of the remote control.
- Push the compartment door latch, and then pull to remove the compartment.
- Install or replace 2 x AA/LR6 batteries, observing the polarity indicated at the bottom of the battery compartment, and as per the diagram shown opposite.
- Close the battery compartment and tighten the screw.



Remote

Note : Switch off the power before replacing batteries. Use only alkaline batteries, other type of batteries may affect the performance.

Non-rechargeable batteries are not to be recharged. Rechargeable batteries are to be removed from the toy before being charged. Rechargeable batteries are only to be charged under adult supervision. Always replace the whole set of the batteries at one time, taking care not to mix old and new ones, or batteries of different types. Different types of batteries or new and used batteries are not to be mixed. Only batteries of the same or equivalent type as recommended are to be used. Batteries are to be inserted with the correct polarity. Exhausted batteries are to be removed from the toy. The supply terminals are not to be short-circuited. Do not throw batteries into a fire. Remove the batteries if you are not going to use the toy for a long period of time. Batteries shall not be exposed to excessive heat such as sunshine, fire or the like.

WARNING : Malfunction or loss of memory may be caused by strong frequency interference or electrostatic discharge. Should any abnormal function occur, remove the batteries and insert them again.

Correct disposal of batteries in this product

(Applicable in countries with separate collection systems) This symbol means that the product contains a battery covered by European Directive 2013/56/EU which cannot be disposed of with normal household waste. All batteries should be disposed separately from the municipal waste stream via designated collection facilities appointed by the government or the local authorities. The correct disposal of your old batteries will help to prevent potential negative consequences for the environment, animal and human health. Inform yourself about the local separate collection system for electrical and electronic products and batteries. Follow local rules and never dispose of the product and batteries with normal household waste. For more detailed information about disposal of your old batteries, please contact your city office or waste disposal service center.



FCC NOTICE

This device complies with part 15 of the FCC Rules. Operation is subject to the following two conditions:

- This device may not cause harmful interference, and
- This device must accept any interference received, including interference that may cause undesired operation.

NOTE:

This equipment has been tested and found to comply with the limits for a class B digital device, pursuant to part 15 of the FCC Rules. These limits are designed to provide reasonable protection against harmful interference in a residential installation. This equipment generates, uses and can radiate radio frequency energy and, if not installed and used in accordance with the instructions, may cause harmful interference to radio communications. However, there is no guarantee that interference will not occur in a particular installation. If this equipment does cause harmful interference to radio or television reception, which can be determined by turning the equipment off and on, the user is encouraged to try to correct the interference by one or more of the following measures:

- Reorient or relocate the receiving antenna.
- Increase the separation between the equipment and receiver.
- Connect the equipment into an outlet on a circuit different from that to which the receiver is connected.
- Consult the dealer or an experienced radio/TV technician for help.

Warning: Changes of modifications to this unit not expressly approved by the party responsible for compliance could void the user authority to operate the equipment.

MAINTENANCE AND WARRANTY

Only use a soft, slightly damp cloth to clean the unit. Do not use detergent. Do not expose the unit to direct sunlight or any other heat source. Do not immerse the unit in water. Do not dismantle or drop the unit. Do not try to twist or bend the unit.

NOTE: Please keep this instruction manual, it contains important information.

This product is covered by our 2-years warranty (Europe only) and 3-month warranty for the other countries. For any claim under the warranty or after-sales service, please contact your distributor and present a valid proof of purchase. Our warranty covers any manufacturing material and workmanship defect, with the exception of any deterioration arising from the non-observance of the instruction manual or from any careless action implemented on this item (such as dismantling, exposing to heat and humidity, etc.). It is recommended to keep the packaging for any further reference. In a bid to keep improving our services, we could implement modifications on the colours and the details of the product shown on the packaging.

WARNING! Not suitable for children under 3 years. Choking hazard – Small parts.

Reference: ROB90EN

Designed and developed in Europe – Made in China, Shantou

Lexibook S.A.
6 avenue des Andes
Bâtiment 11
91940 Les Ulis
France

www.lexibook.com – © Lexibook®

LEXIBOOK Limited
Unit 8-9, 4th Floor
Kenning Industrial Building
19 Wang Hoi Road
Kowloon Bay, Kowloon
Hong Kong

USA (English):
Please contact the following email address for service and technical support:
E-mail: savcomfr@lexibook.com

Lexibook America Inc.
C/O Pramex International
- Groupe BPCE
1251 Avenue of the Americas,
3rd Floor
New York, NY 10020
USA

Canada (English):
Do not return this product to the store which sold it. Please contact us first at the following email address for service and technical support.
E-mail: savcomfr@lexibook.com



Follow us
@LexibookCom



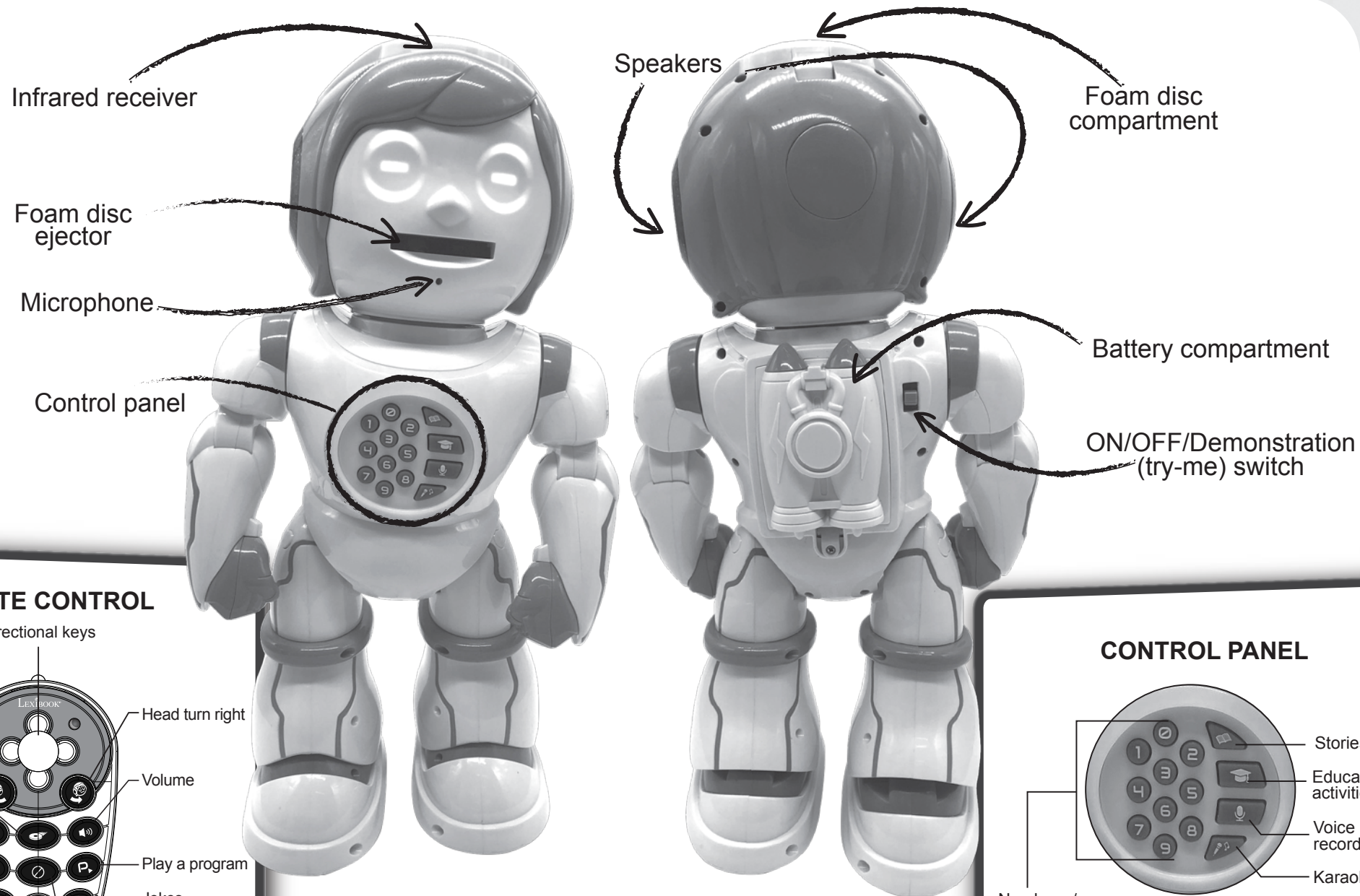
Environmental Protection:

Unwanted electrical appliances can be recycled and should not be discarded along with regular household waste! Please actively support the conservation of resources and

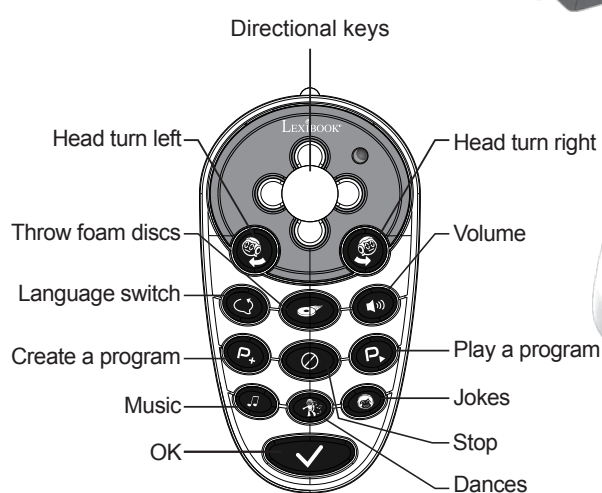


IM code: ROB90_09ENIM2250

DISCOVER POWERMAN® KID

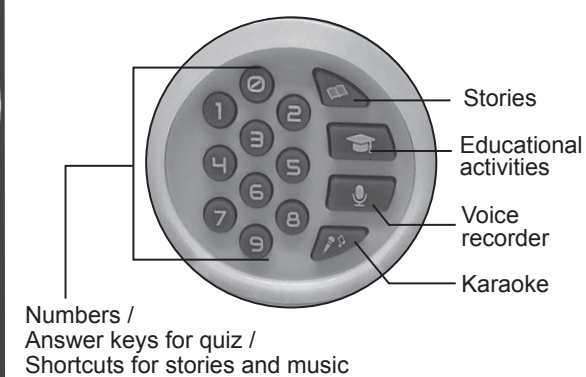


REMOTE CONTROL



Note: If the remote control responds intermittently, or if it only works from a close distance, the batteries may need to be replaced.

CONTROL PANEL



Note: If the robot responds intermittently, the batteries may need to be replaced.

Directional keys

Use the joystick on the remote control to move the robot forward, backward, right or left. By keeping one direction pressed, it will move forward, backward and turn faster!

Press these keys to turn the head left or right.

Important! The head can struggle to turn and even become stuck. If the head is stuck or does not turn far enough on one side when it is in central position, turn it with your hands gently towards the side that is stuck, around 45°.

Language switch

Press on this key to switch from English to Spanish.

Foam discs shooting

Press this key to throw foam discs.

Warning! Do not aim at eyes or face. Launch provided discs only and do not use improvised objects. Do not load more than 9 discs into the foam disc compartment.

Volume

Press this key to adjust the sound volume: Low > Normal > High

Programming

- Press **P+** to create a program.
- Record actions by pressing any of the following keys:



- You can add music by pressing **M** or numbers on the chest.
- Once finished, save your program by pressing **P+**.
- At any moment, you can play your program by pressing **P**.

Note: any new program or restart of the robot erase the current program.

STOP

By pressing this key, the robot will immediately stop what he is doing.

Music

Press this key to play a music, press again to play another music.

Dances

Press this key to play a dance, press again to play another dance.

Jokes

Press this key to listen to a joke or a surprise sound, press again to listen to another one.

Stories

Press this key and 1 or 2 on the chest to select between :

- 1 Aesop's Fables** = select one of the 8 Aesop's Fables told by POWERMAN® KID by pressing a number on the chest (1-8).
- 2 The story maker** = create your own funny and crazy story by pressing 4 numbers on the chest (0-9). 10,000 combinations are possible!

Educational activities

Press this key and a number between 1 and 6 on the chest to launch an educational activity :

- 1 The Words quiz!** POWERMAN® KID will ask you to translate words from English to Spanish. Answer by pressing **✓**.
- 2 The Sentences quiz!** POWERMAN® KID will ask you to translate sentences from English to Spanish. Answer by pressing **✓**.
- 3 Numbers quiz!** POWERMAN® KID will say a number in Spanish, and you'll have to find it! Answer by pressing the numbers on the control panel.
- 4 The Animal Quiz!** How well do you know the animal sounds? Clap your hands once when you hear the right answer.
- 5 The Musical Instrument Quiz!** How well do you know the musical instruments? Clap your hands when you hear the right answer.
- 6 The Location Quiz!** Will you recognize these sounds of places? Clap your hands once when you hear the right answer.

Warning! POWERMAN® KID is noise sensitive for activities 4, 5, and 6. Play in a quiet place.

Voice recorder

Press this key and speak close to POWERMAN® KID's face. He will repeat after you!

Karaoke

Press this key, speak close to POWERMAN® KID's face, select a melody by pressing a number between 1 and 3 on the chest. He will repeat with music!

Sleep mode

If you leave POWERMAN® KID unused for a certain period of time, it will automatically go into standby mode to save power.

In sleep mode, the remote turns off automatically. It will work again after you wake up POWERMAN® KID with the control panel.

Sleep mode is suitable for short periods of time. If you don't plan to use the robot for a few hours or more, please use the ON/OFF switch.